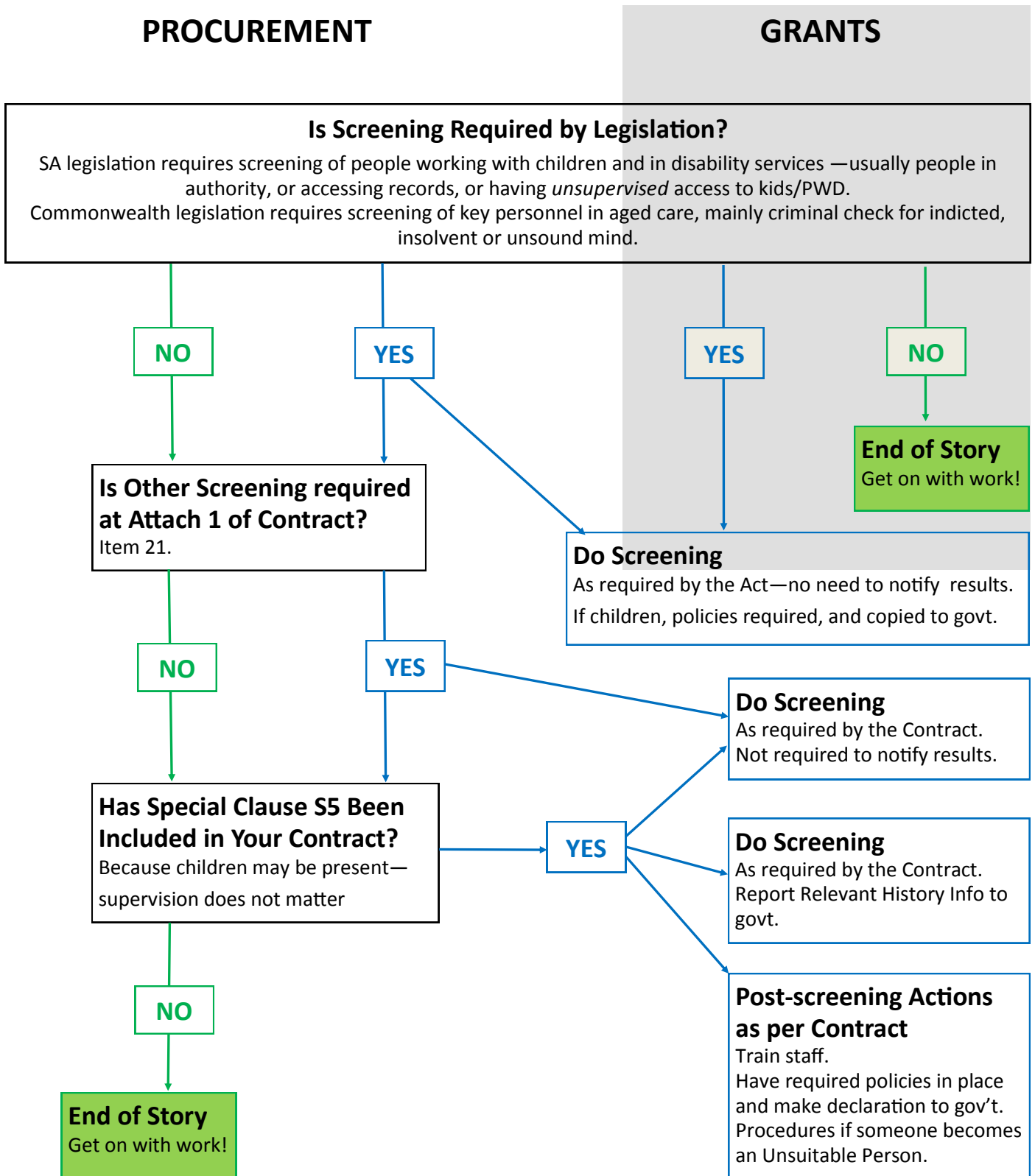


Greg's Tentative Guide to Screening Requirements

Tentative because we have asked for a review of clauses, and there may be changes when the *Child Safety (Prohibited Persons) Act 2016* is fully operational. Plus usual disclaimer re not being legal advice.



Screening checks from DHS cost between \$90 and \$108 for employees, \$60 for students. Free for volunteers. The presumption of innocence does not apply. Decisions are reviewable only in limited circumstances.

Further information: <https://screening.sa.gov.au/screening-process>